

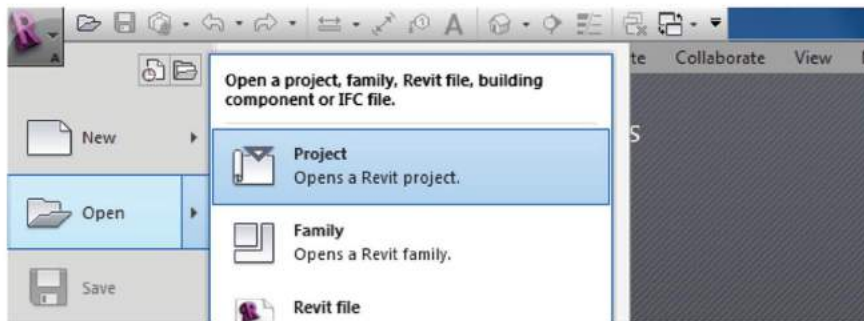
## CP ELECTRONICS BIM USER GUIDE



## Loading the PIR Detectors into your project

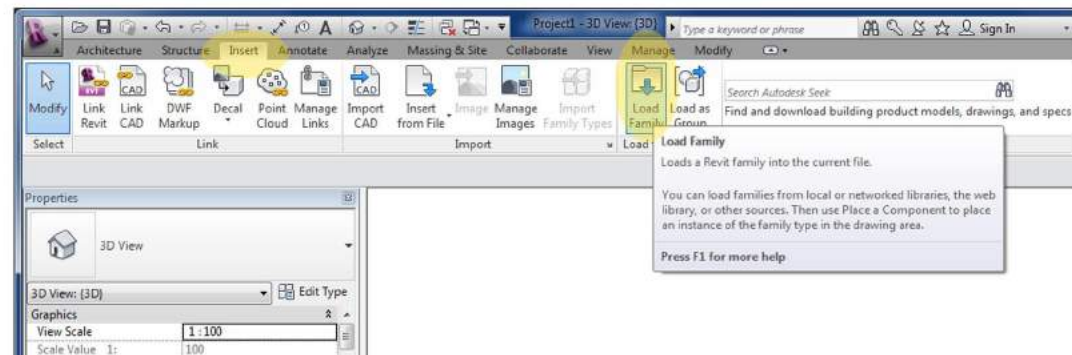
These components have been created as 'face based' families with standard configurations pre-defined as 'types'. You can add the family into your project using the following method.

1. Open the Revit family containing your "project" and navigate to a floor plan view.

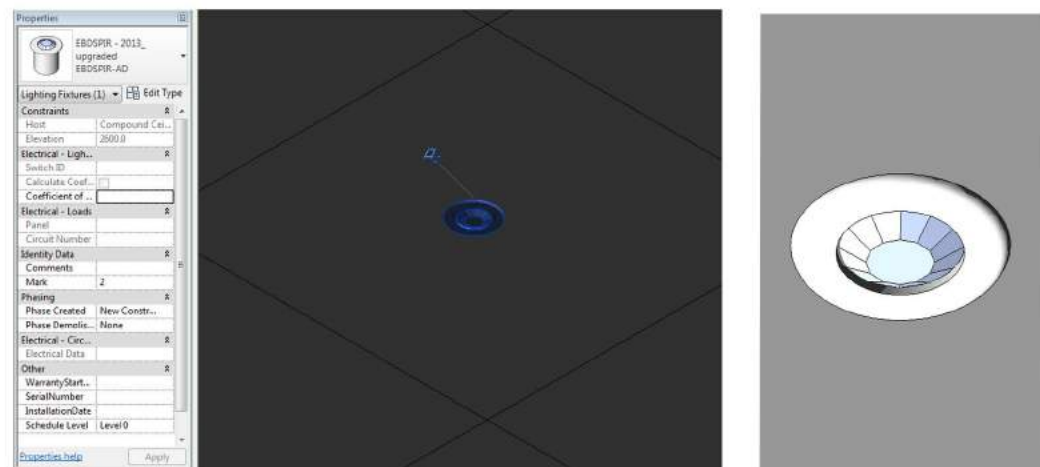


2. Now save the component that you downloaded from bimstore to your desired location on your computer in line with your computer protocols)

3. To load the component into the project, go to 'Insert Tab/Load Family/Select the component from your saved location as shown below.



4. The Family is now copied & embedded into your project and can be selected from the 'Project Browser/Families/Electrical Fixtures selector within your project. (You can delete the item you added to your 'Revit Model' and the family will remain within your Project Browser.)



## Loading the PIR Detectors into your project

Now embedded into your project the PIR Detector component can be selected from either the 'Electrical Fixtures' list in the 'Project Browser' and dragged into your model or by selecting 'Components' in the 'Architecture' tab and selecting the family from the 'Type Selector' drop down in the Properties Box'.

Place the component in the desired location, the families are 'Faced Based' components meaning they can be placed on any surface and can also be incorporated into linked models for MEP usage),

Once the family is placed on a surface and selected, the 'Properties' box will appear on the screen. Under the heading 'Constraints' is the parameter labelled 'Elevation' - adjust this dimension to suit the required dimension then click apply.

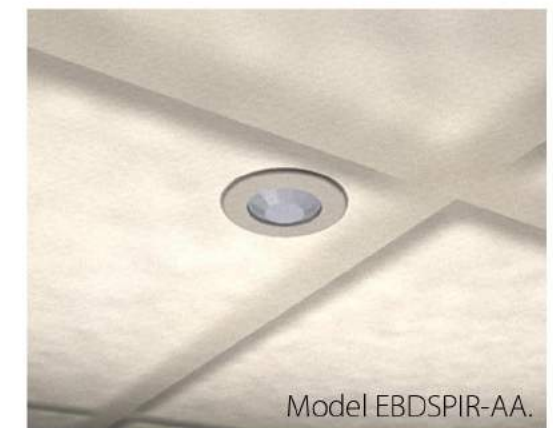
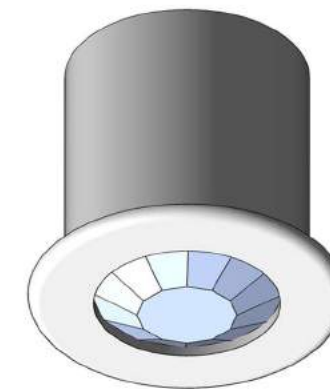
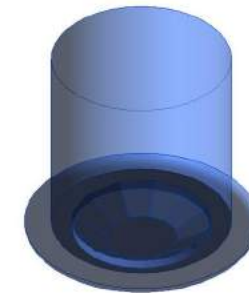
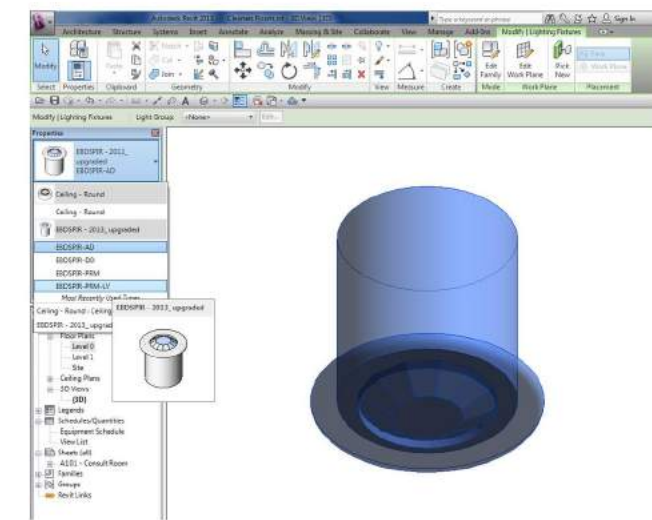
By selecting 'Edit Type' in the 'Type Selector' gives access to the components information and the manufacturers details.

### Detail Level

Fine



Coarse



### Other Notes

This component is for design intent only and the data contained within should be treated as such. Please contact the manufacturer for more details and product literature.

You can add the Gradus components to your company template file, they will then be available without loading when starting a new project.

### Revisions

Version 1.0 - First Issue





CP Electronics  
 A business unit of Legrand Electric Limited,  
 Brent Crescent,  
 London NW10 7XR, UK  
 +44 (0)333 900 0671  
 info@cpelectronics.co.uk

[www.cpelectronics.co.uk](http://www.cpelectronics.co.uk)

connect with us    

A brand of  **legrand®**